

Historic Royal Palaces Kensington Palace



“You kissed me because you were awfully nice and I was awfully nice and we both liked kissing very much. It was inevitable.”

Noël Coward, *Hay Fever*. A friend of Princess Margaret and Lord Snowden, the playwright attended the glamorous palace parties hosted by the royal couple in the 1960s.



Love reigns

An illustrious palace enjoyed by the great and the glamorous for centuries, few settings run as rich in allure, beauty and a vivid sense of history as Kensington Palace.

Still home to British royalty, its timeless elegance and storied past will charm and delight as you gather with family and

friends to celebrate and mark this very special moment in your own lives.

Located within tranquil Kensington Gardens, the palace's inspiring venues are some of the most beautiful in London. Whether it is the glorious Orangery, immaculate palace

gardens or wondrous state rooms, the romance of Kensington Palace promises you and your guests an unforgettable atmosphere – and a day forever remembered.



Your palace awaits



Our full attention

You are hiring a spectacular venue – but as our clients you will also enjoy a personal service from our experienced events team.

We will meet with you regularly to help realise your dream wedding. As experts on our venues, we know what goes into creating that enchanting atmosphere you and your guests will love to remember.

We will also introduce you to a first-class range of suppliers. Their familiarity with the palace means your day will go perfectly.

Stunning spaces

Your specialist events manager will show you the available venues. The beautiful Orangery (p 6-7) is available for day and evening hire and licensed for civil wedding and partnership ceremonies. Summer receptions can be held in the gardens (p 8-9) and a number of wonderful spaces inside the palace (p 10-11) are available for evening hire, from the distinctive Cupola Room to the beautiful Entrance Hall, with its hub of spaces at the heart of the building.

Picture perfect

Wedding photography at the palace is exclusive to couples hiring a venue. Graceful architecture, flamboyant interiors and splendid gardens make it a wonderfully picturesque backdrop.



Centuries of style

A prestigious stage for hundreds of years, the state rooms are where powerful politicians and courtiers jostled for influence and the ear of the king. The palace's exquisite sense of style, shaped by artists, craftsmen and fashionable residents, also made it a wonderful venue for the royals' intimate family gatherings and extravagant all-night parties. Today, Kensington Palace remains a royal home, residence to the Duke and Duchess of Cambridge.



The Orangery



Capacity

**300 for receptions
120 for dinner and dancing
150 for civil ceremonies**

The space

It is perhaps the world's most beautiful orangery. Built in 1704, Queen Anne originally intended to winter her orange trees here; instead it was frequently used as a venue for lavish balls and celebrations. Popular year-round, this romantic venue's palatial interior décor, Portland stone terrace and tranquil surroundings make it one of London's premier wedding venues.

Features

- Licensed for civil wedding and partnership ceremonies
- Guests spilling onto its south-facing stone terrace can enjoy long summer evenings
- Accommodate larger receptions with lawn and terrace marquees
- Enjoy dancing and amplified music
- Easy access to the Orangery Gardens, where pyrotechnics are permitted
- Available for evening and limited daytime hire



East Front Gardens

400 for receptions

Guests can toast the happy couple while enjoying panoramic views of the palace from these beautifully landscaped gardens. Part of a £12 million refurbishment completed in 2012, the East Front's delightful transformation was inspired by old layouts of trees, borders and topiary from the time of King George II.

“A might fine cool place... with a great layer of water in the middle.”

Samuel Pepys, 17th-century diarist, on the palace's Sunken Garden

Sunken Garden

80 for receptions

This lovely, secluded English garden is ideal for drinks receptions. Family and friends can mingle on terraces among the exotic, vibrant flowers, which rotate throughout the year. Tulips and pansies bloom in spring; geraniums, cannas and begonias provide a riot of colour in summer.



Orangery Lawn

1000 for receptions

Receptions held on this lush, manicured green sit nestled between the perfection of the Orangery and the magnificent palace itself. A luxurious marquee on the lawn allows you and your guests to celebrate in a relaxed, but beautiful outdoor setting.



Palace venues

Exquisite interiors that lend flamboyance and flair to a wonderful evening



Entrance Hall

**300 for receptions
140 for dinner**

Opening onto the lovely East Front Gardens, the Entrance Hall elegantly stretches into the palace, leading guests to four enchanting and distinctive spaces including Stone Hall, White Court, the Stone Staircase and the Vestibule. This versatile 'hub' at the heart of the palace is beautifully decorated, can accommodate a small band and offers a beautiful platform for speechmaking.



Cupola Room

**100 for receptions
80 for dinner**

This splendidly decorated room features a trompe l'oeil painted on the ceiling (creating the illusion of an elaborately gilded dome) as well as a curiously large centre-piece that tells time and plays music. A setting for countless royal nights of music, dancing and celebration, your guests will enjoy the Cupola Room's wonderful views of the palace gardens and Orangery.



King's Gallery

**170 for receptions
100 for dinner**

Masterpieces from the Royal Collection line the walls of this prestigious room. Perfectly suited for princely celebrations, it is the palace's largest space. The grand windows allow you and your guests to survey the surrounding gardens, William III's statue and the palace's iconic golden gate.



King's Drawing Room

**100 for receptions
90 for dinner**

Courtiers searching for power and patronage would have packed this wonderful room during royal parties hosted by the king. Fabulous artistry is evident in the paintings on display. And your guests will enjoy the fantastic vista of the avenues of Kensington Gardens, which converge outside the chamber's central window.

All our best To the happy couple...



We would like to offer sincere congratulations on your engagement – and our very best wishes as you prepare to celebrate a defining moment in both your lives.

With much to prepare in the coming months, we are sure you know choosing a venue is one of your most important decisions.

If we can help in any way, then please call us. Our event specialists will answer any questions about weddings at the palace, and discuss how Kensington could fit into your plans, with absolutely no obligation.

You can also visit the palace and see the venues for yourself. We would love to show you around.

We look forward to hearing from you, and wish you all the best during this happy time.

Sincerely yours,

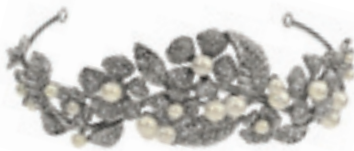
**The Historic Royal Palaces
events team**

**Call us for more information about hiring any
of its magnificent venues for your wedding.**

T. 020 3166 6115
E. kensingtonpalaceevents@hrp.org.uk
www.hrp.org.uk/HireAVenue/weddings

Kensington Palace
Kensington Gardens, London W8 4PX

**A romantic retreat in the centre
of London, Kensington Palace will
enchant and surprise you with its
lavish style and colourful history.**



Wedding gifts

If you are looking for bridal jewellery, including tiaras, groom and usher accessories, unusual favours, gifts for bridesmaids or gifts to add to your wedding list, may we suggest that you look to Historic Royal Palaces for inspiration.

Please contact us if you would like help in making the right choice. We pride ourselves in offering high quality products, unrivalled customer service and working with all our customers' varied requirements to provide the complete gift service.

Please visit our website www.historicroyalpalaces.com or contact us on 020 3166 6857 or corpgifts@hrp.org.uk.

Getting here



By tube or rail

Nearby underground stations are Queensway, High Street Kensington and Notting Hill Gate. Nearest mainline station is Paddington.

Closing times

Carriages are at 22.30 hours however with permission these times may be extended.

Vehicle access

Vehicle access for suppliers and guests is via Jubilee Walk and Orme Square Gate.



Historic Royal Palaces Kensington Palace

William III and Mary II wanted to live in fresh country air away from the damp and smoke of Whitehall, so they commissioned Sir Christopher Wren to build Kensington Palace. We use William's royal coat of arms, with his family motto 'I will maintain', words that aptly reflect the palace's special collection of historic and modern royal dress.

The stylish deep pink silk wall covering in the King's Gallery inspires the Kensington Palace pattern.

We raise all our own funds and depend on the support of our visitors, members, donors, sponsors and volunteers.

Call us to arrange a viewing
of the palace's magnificent
wedding venues

T. 020 3166 6115
E. kensingtonpalaceevents@hrp.org.uk

www.hrp.org.uk